



**EXECUTIVE STYLE  
PROPERTY**



**3/481-485 Bronte Road Bronte NSW**

1 1

LEASED BY SUZY GILMOUR 0412 559 651

**Type** : Apartment

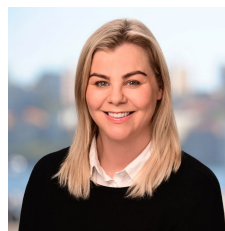
**View** : <https://www.executivestyleproperty.com.au/lease/nsw/eastern-suburbs/bronte/residential/apartmen-t/8158757>

Situated at Bronte Beach in one of the most convenient locations available you will find the beach, park, cafes and transport just across the road from this beach hideaway.

Large bedroom with built-ins plus a separate study, great for work from home.

Well proportioned and exceptionally renovated bathroom.

This apartment gives you an immediate sense of calm and beach-side living, making this your ideal lifestyle Sydney base.



**Suzy Gilmour**  
0419 201 311

[For full version visit the website](https://www.executivestyleproperty.com.au)

<https://www.executivestyleproperty.com.au>