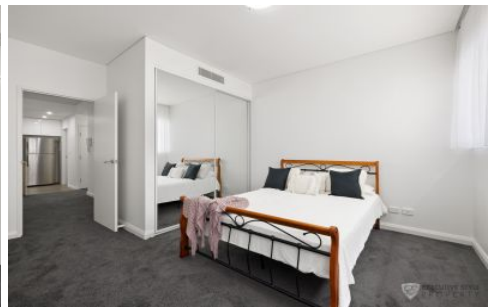




**EXECUTIVE STYLE
PROPERTY**



107/11D Mashman Avenue Kingsgrove NSW

1 1 1

This modern residence with oversized entertainer's balcony occupies a prime private position in a desirable modern building.

All the local conveniences at your doorstep, Kingsgrove Train Station, Woolworths, local schools, cafés & eateries.

A great opportunity for the first home buyer or investor looking to get into the market.

Total size 95sqm
81sqm apartment (Including balcony)
15sqm allocated parking space.

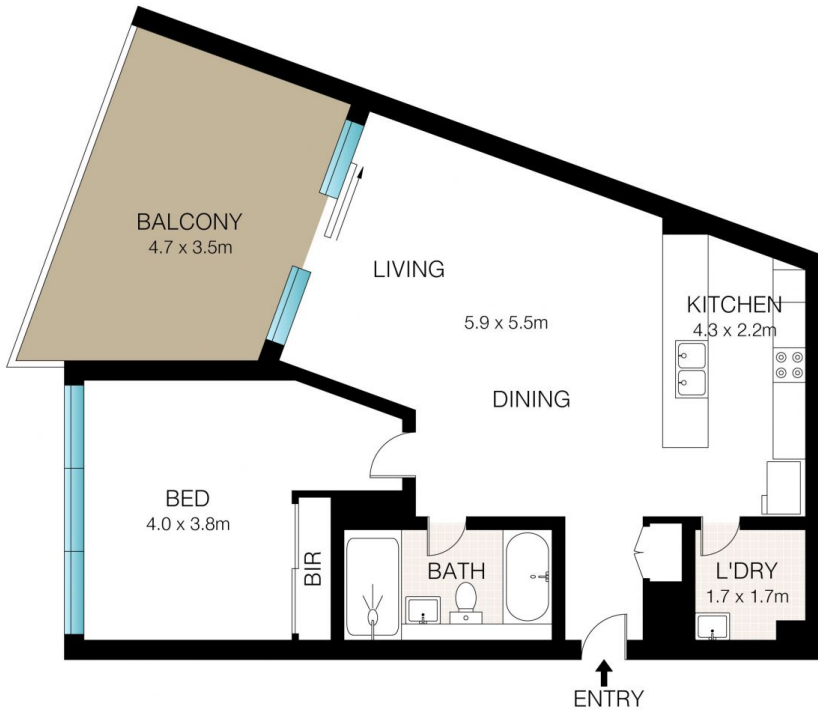
- + Best layout in building
- + Massive balcony, great to entertain
- + Open plan living and dining area, adjoining large balcony

Price : FOR SALE: \$555,000
View : <https://www.executivestyleproperty.com.au/sale/nsw/st-george/kingsgrove/residential/apartment/7913505>



Dean Merrett
0419 201 311

<https://www.executivestyleproperty.com.au>



LEVEL 1



BASEMENT



INT+BAL: 81m²
TOTAL: 95m²



This Floor Plan was prepared by WWW.CRYINGOUTLOUD.COM.AU for illustration purposes only. This document does not constitute any part of an offer or contract. Dimensions are approximate only. Copyright ©2024 Crying Out Loud. All Rights Reserved.

107/11D Mashman Avenue, Kingsgrove