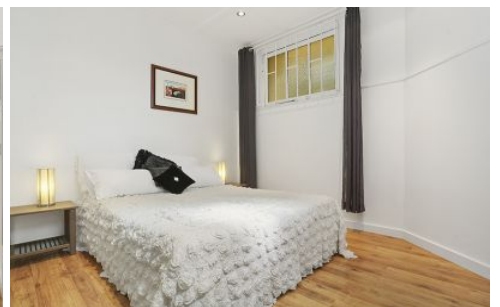




**EXECUTIVE STYLE
PROPERTY**



13/286 Arden Street Coogee NSW

2  1 

LEASED 1ST INSPECTION! BY SUZY GILMOUR 0412 559 651

View : <https://www.executivestyleproperty.com.au/lease/nsw/eastern-suburbs/coogee/residential/apartment/7894622>

BEST LOCATION Luxury two bedroom garden apt with private entrance literally one min walk to coastal walks, gourmet dining, hip cafes & Coogee Beach.

Public transport on the doorstep, fast and efficient approx. 20 min to the city CBD and only 15 min to Bondi Junction by direct bus.

DESIRABLE APARTMENT INCLUSIONS

- + Private entrance
- + Beautifully presented apartment
- + Timber floors, ample storage
- + Queen sized bed with in built wardrobe
- + Second bedroom with Queen



Suzy Gilmour
0419 201 311

<https://www.executivestyleproperty.com.au>