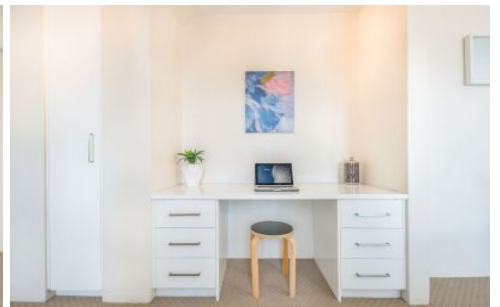




**EXECUTIVE STYLE
PROPERTY**



9/58 Kurraba Road Neutral Bay NSW

1 1 1

Access to building - via Boyd Lane

SUN DRENCHED Northerly aspect and open outlook, this LARGE apartment is the perfect property for people that need sun in their life!

The building features a rooftop terrace with sensational 360 degree Harbour & City views with level lift access.

Easy access of ferry, city bus, harbour foreshore and convenience shops.

DESIRABLE FEATURES

- + Separate working desk area
- + Sunny north facing
- + Large LCD TV
- + Queen sized bed with in built wardrobes

View : <https://www.executivestyleproperty.com.au/lease/nsw/north-shore-lower/neutral-bay/residential/apartment/7708444>



Tyler Leighton
0419 737 516

<https://www.executivestyleproperty.com.au>