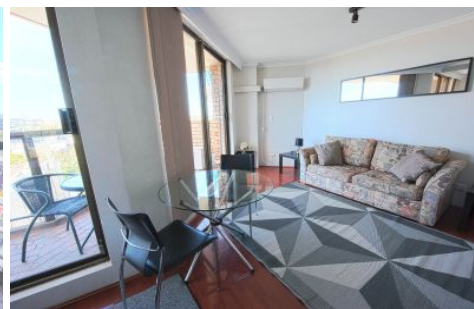
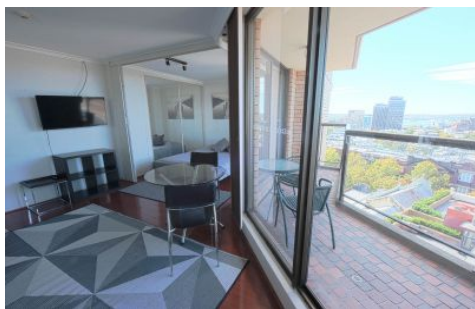




**EXECUTIVE STYLE  
PROPERTY**



**99/220 Goulburn Street Surry Hills NSW**

1

BRIGHT & SUNNY NORTH FACING apartment with balcony positioned just meters from Cosmopolitan Crown Street and only a 5min walk to CBD.

**View** : <https://www.executivestyleproperty.com.au/lease/nsw/eastern-suburbs/surry-hills/residential/studio/7699485>

Cafes, shopping, supermarket, wine bars and fine dining restaurants all within walking distance.

Train station and many buses only short 5min walk.

**APARTMENT FEATURES:**

- + Large Balcony
- + Air-conditioning
- + Floating timber floors
- + Built-in wardrobes
- + New leather couch
- + Large bathroom
- + Full glass windows looking to Sydney Harbour

<https://www.executivestyleproperty.com.au>