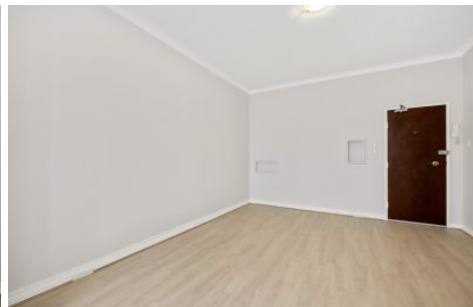




**EXECUTIVE STYLE  
PROPERTY**



### 12/7 St Neot Avenue Potts Point NSW

1 1

Perfectly sized apartment located on beautiful tree-lined St Neot Avenue, your very own peaceful and private retreat from the cosmopolitan city surroundings with a charming Juliet balcony for the evening breeze.

Location is key; A short stroll to Macleay Street village and located at the quiet 'Parisian end' of Potts Point, with access to the shared roof terrace boasting spectacular views of the Harbour Bridge and Opera House.

#### PROPERTY FEATURES

- + Well proportioned kitchenette
- + Separate bathroom
- + Timber floors, steel-framed windows, leafy outlook
- + Microwave, Cooktop and Refrigerator
- + Shared laundry facility's

**View** : <https://www.executivestyleproperty.com.au/lease/nsw/eastern-suburbs/potts-point/residential/apartment/7695225>



**Tyler Leighton**  
0419 737 516