



**EXECUTIVE STYLE  
PROPERTY**



**211/11D Mashman Avenue Kingsgrove NSW**

1 1 1

This modern residence with oversized entertainer's balcony occupies a prime private position in a desirable modern building.

All the local conveniences at your doorstep including, Kingsgrove Train Station, Woolworths, local schools, cafés & eateries.

Large 92sqm apartment, plus 15sqm allocated parking space. TOTAL 107sqm

A great opportunity for the first home buyer or investor looking to get into the market.

- + Massive balcony
- + Open plan living and dining area, adjoining large balcony
- + Modern kitchen with gas cooking & SMEG appliances

**Price** : \$ 566,000  
**Land Size** : 92 sqm  
**View** : <https://www.executivestyleproperty.com.au/sale/nsw/st-george/kingsgrove/residential/apartment/7609710>

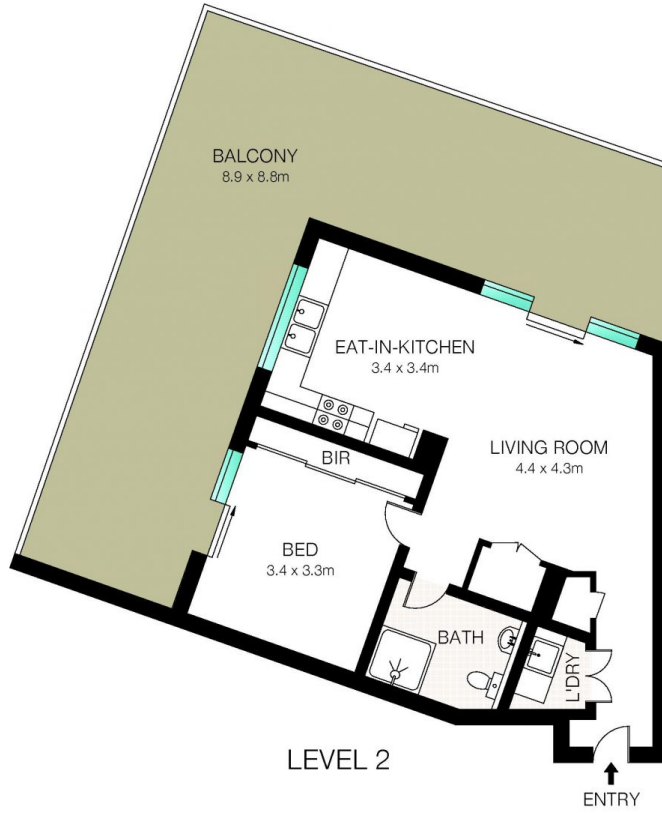


**Dean Merrett**  
**0419 201 311**

<https://www.executivestyleproperty.com.au>



BASEMENT



LEVEL 2



TOTAL: 92m<sup>2</sup> 

This Floor Plan was prepared by WWW.CRYINGOUTLOUD.COM.AU for illustration purposes only. This document does not constitute any part of an offer or contract. Dimensions are approximate only. Copyright ©2023 Crying Out Loud. All Rights Reserved.

211/11D Mashman Avenue, Kingsgrove