



**EXECUTIVE STYLE
PROPERTY**



20A/6A Greenknowe Avenue Potts Point NSW

2 1

A lovely quiet haven in this 2-bed residence offers elegant living in a coveted location.

Sunlit living and dining area with a westerly orientation, plus modern kitchen and bathroom with smart modern touches.

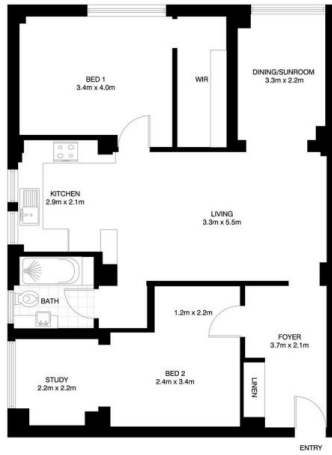
- + Furnished with high quality Scandinavian designer furniture
- + Updated throughout w retained Deco elegance
- + Leafy west-facing orientation allowing plenty of natural light
- + Master bedroom w walk-in robe, large 2nd bed w study space
- + Sun-filled dining room or sunroom, a bright space
- + Kitchen with dishwasher
- + Sonos speakers

Land Size : 84 sqm
View : <https://www.executivestyleproperty.com.au/ease/nsw/eastern-suburbs/potts-point/residential/apartment/7524963>



Dean Merrett
0419 201 311

<https://www.executivestyleproperty.com.au>



ELIZAETH BAY
20/6A GREENKNOWE AVENUE
*INTERNAL FLOOR AREA APPROX 84m²



*PLANS SHOWN ONLY INDICATIVE OF LAYOUT. DIMENSIONS ARE APPROXIMATE.
Floor plan supplied by V Mark Design Pty Ltd. This floor plan is provided for indicative purposes only.
Measurements are approximate and not to scale. The vendor, agency and supplier will accept no liability for its accuracy. Interested parties are advised to make their own independent enquiries.