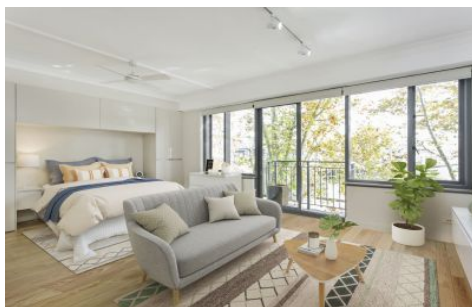




**EXECUTIVE STYLE  
PROPERTY**



### 5/57 Cowper Wharf Road Woolloomooloo NSW

1 1 1

Sunny north facing and quietly located in a modern security block.

Opposite Woolloomooloo Bay and the iconic Finger Wharf, this light filled apartment enjoys views of leafy treetops, the shimmering harbour and across to the city skyline.

Opening to a Juliette balcony.

This harbourside apartment is footsteps from trendy cafes, bars, restaurants and convenience stores, and a short stroll to Potts Point shops, the Botanic Gardens and Sydney CBD.

- + Spacious open plan living with northerly balconette
- + New eat-in kitchen with dishwasher, ceramic hob, oven
- + Bespoke finishes and clever storage solutions

**View :** <https://www.executivestyleproperty.com.au/lease/nsw/sydney-city/woolloomooloo/residential/apartment/6680792>



**Dean Merrett**  
0419 201 311

<https://www.executivestyleproperty.com.au>