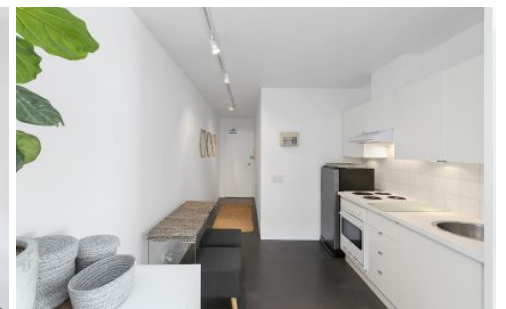
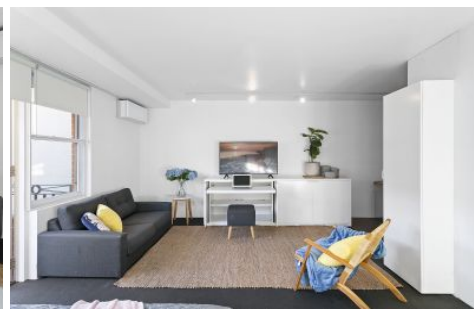
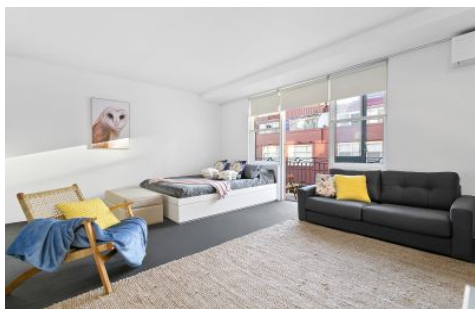




**EXECUTIVE STYLE  
PROPERTY**



**11/165 Dowling Street Woolloomooloo NSW**

**1**

#### LOCATION LOCATION!

This apartment is a generous design for a city pad. It's all about location, but with its separate full kitchen, full bathroom and balcony, you'll have lots of room to enjoy it.

#### HIGHLIGHTS

- + Large furnished designer apartment
- + Integrated joinery, storage space, work desk
- + Neat/tidy full separate kitchen
- + Built in wardrobe, gallery lighting
- + Recently installed brand new air conditioning
- + One of the best positions in city
- + Potts Point dining & cafes at door
- + Walk-everywhere Sydney lifestyle
- + 8 min walk to Woolloomooloo waterfront

**Land Size** : 40 sqm  
**View** : <https://www.executivestyleproperty.com.au/ease/nsw/sydney-city/woolloomooloo/residential/studio/5975454>



**Dean Merrett**  
**0419 201 311**

<https://www.executivestyleproperty.com.au>