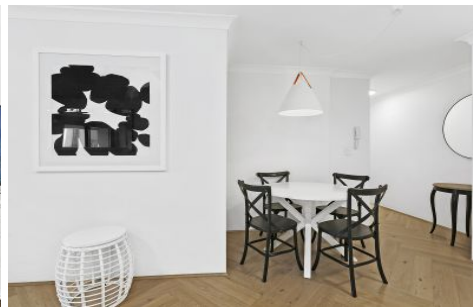
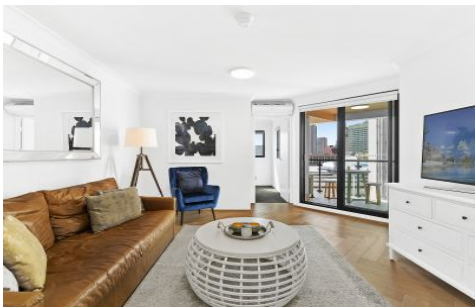




**EXECUTIVE STYLE
PROPERTY**



404/1-5 Randle Street Surry Hills NSW

1 1

Large air-conditioned fully furnished apartment in Surry Hills most sought after spots - walking distance to Holt, Crown and Foveaux Streets featuring some of Sydney's hottest restaurants, cafes and bars.

View : <https://www.executivestyleproperty.com.au/lease/nsw/eastern-suburbs/surry-hills/residential/apartment/5946220>

This large one bedroom apartment features lush designer furniture, opening to your own private balcony with outdoor seating.

Woolworths Metro Supermarket is just across the road to buy groceries and household essentials

Prince Alfred Park is behind the building and is an award winning oasis of green offering the city's first outdoor heated pool and exercise circuits.

CBD is just a few minutes walk away and yet the apartment



Dean Merrett
0419 201 311



PLANS SHOWN ARE ONLY INDICATIVE OF LAYOUT. DIMENSIONS ARE APPROXIMATE

All information contained herein is gathered from sources we believe to be reliable, however we cannot guarantee its accuracy and interested persons should rely on their own enquiries. Dimensions are approximate.



404/1 RANDLE STREET

SURRY HILLS
Apartment Size: 57m²