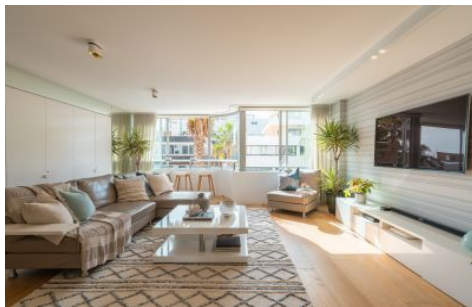




**EXECUTIVE STYLE  
PROPERTY**



### 202/152 Campbell Parade Bondi Beach NSW

2 🛏 2 🚿 1 🚗

Located on the world-renowned Bondi Beach esplanade, this north-facing, sun-drenched oversized apartment offers rare and unique appointments within the tightly kept boutique apartment building, known as 'The Bondi.' Designed by internationally renowned PTW Architects, this Eastern suburbs landmark is coveted not only for its proximity to Bondi Beach and the surrounding entertainment and dining options but also in its own right, for offering prestigious living solutions.

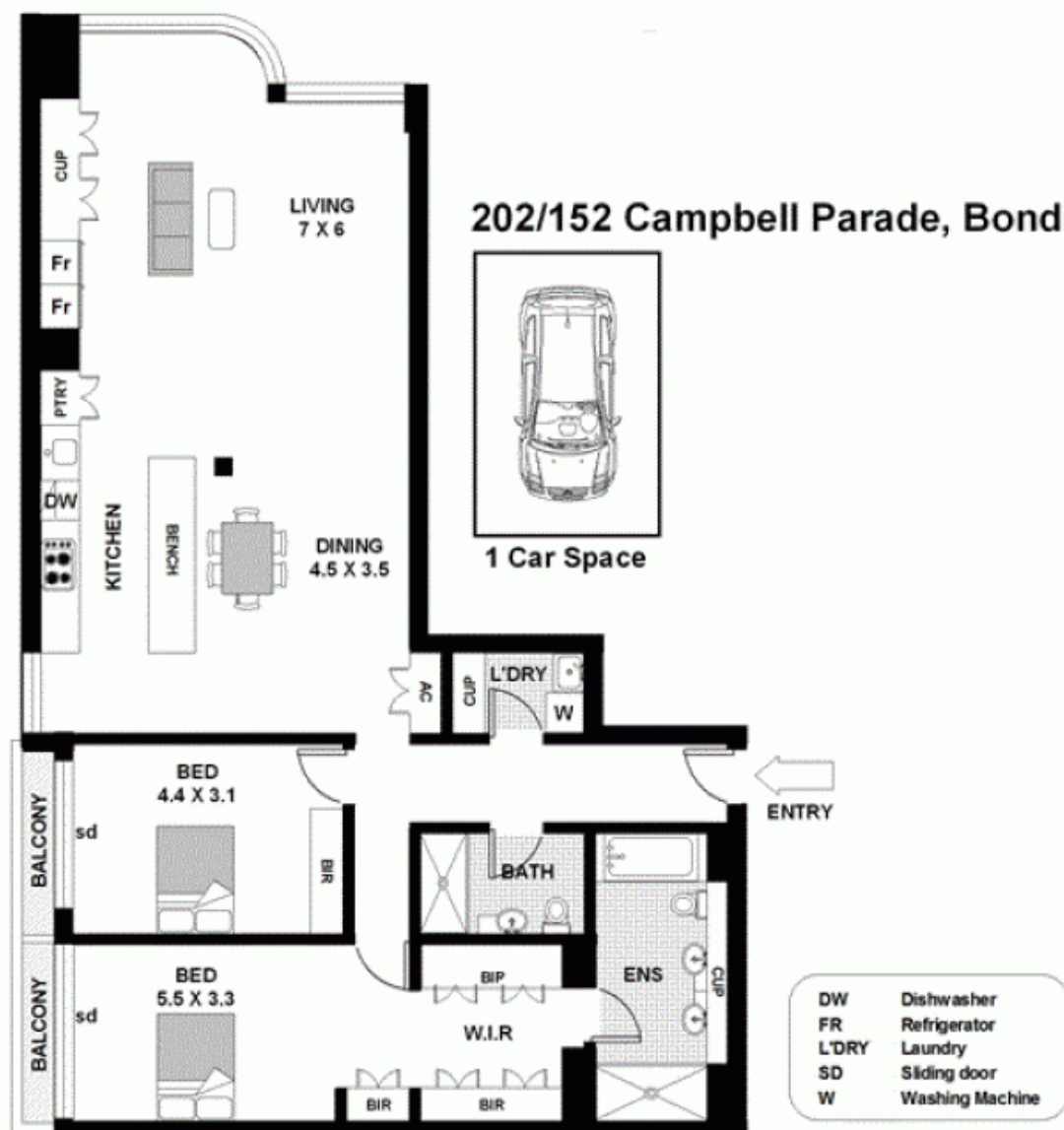
The 127sqm of living space was beautifully conceived by award-winning interior design firm Hecker Guthrie, resulting in opulent features throughout, with decadent European-appointed baths, underfloor heating, a state-of-the-art Calacatta marble entertainer's kitchen, and wide Oak floors.

**Price** : \$ 1,925,000  
**Land Size** : 127 sqm  
**View** : <https://www.executivestyleproperty.com.au/sale/nsw/eastern-suburbs/bondi-beach/residential/apartment/5666270>



**Dean Merrett**  
0419 201 311

## 202/152 Campbell Parade, Bondi Beach



This diagram is for illustrative purpose only. All reasonable care has been taken in the preparation, but no warranty is given as to the accuracy of the information. This document does not constitute any part of any offer or contract. Dimensions shown are approximate only. Prospective purchasers must rely on their own enquiries.

