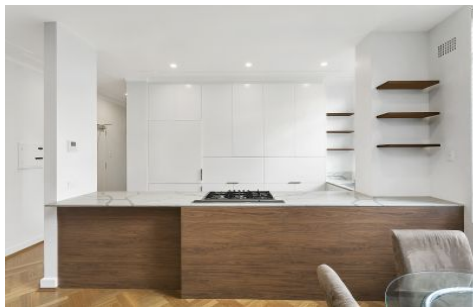




**EXECUTIVE STYLE  
PROPERTY**



**504/109 Darling Point Road Darling Point NSW**

2 1

Fresh and contemporary, you really need to see it, perfect for executives..

**View** : <https://www.executivestyleproperty.com.au/lease/nsw/eastern-suburbs/darling-point/residential/apartment/5666226>

Large just renovated 2 bedroom property.

Elevated in a light and leafy setting, this large top floor apartment embodies a practical layout with character details but with modern finishes.

The combined living and dining area opens onto two delightful balconies set against established gardens, while an open plan kitchen is great to entertain.

Peacefully positioned in a beautiful bayside address, this apartment is located just 400m to McKell Park and easy strolling distance to cafes, yacht clubs, Rushcutters Bay Park, Edgecliff Station and city bus or ferry transport.



**Dean Merrett**  
**0419 201 311**