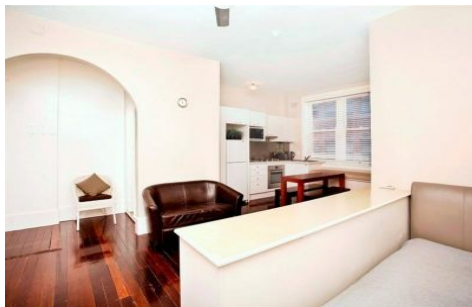




**EXECUTIVE STYLE
PROPERTY**



603/3-5 Greenknowe Avenue Potts Point NSW

1 1

Tara is an immaculate building which is ideally positioned footsteps to the cosmopolitan lifestyle of Macleay Street Potts Point.

This LARGE apartment is on the 6th floor making it comfortable and generous, with easily defined spaces for living and dining areas.

The property has a great bathroom with bath and a stylish and contemporary kitchen with quality appliances and excellent storage.

Nearby are many cafes, fine dining restaurants and wine bars all within walking distance plus main supermarket shopping only 200 mtrs around the corner.

Situated 4 min walk to train station, bus at the door or

Land Size : 30 sqm
View : <https://www.executivestyleproperty.com.au/ease/nsw/eastern-suburbs/potts-point/residential/studio/5666139>

<https://www.executivestyleproperty.com.au>