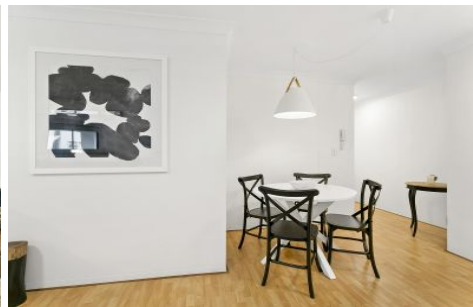




**EXECUTIVE STYLE
PROPERTY**



404/1-5 Randle Street Surry Hills NSW

1 1

Large air-conditioned fully furnished apartment in one of Surry Hills' most sought after spots; just walking distance to Holt, Crown and Foveaux Streets featuring some of Sydney's hottest restaurants, cafes and bars.

View : <https://www.executivestyleproperty.com.au/lease/nsw/eastern-suburbs/surry-hills/residential/apartment/5666094>

This large one bedroom apartment features brand new lush designer furniture, opening to your own private balcony with outdoor seating.

The security block offers lift access and intercom.

Groceries and household essentials are easily purchased with a Woolworths Metro just across the road.

If you're an artist, many of the city's finest galleries are close at hand and for those keen to add to their studies the University of Technology NSW, TAFE NSW and many



Dean Merrett
0419 201 311



0 1 2 3 SCALE (METRES)

PLANS SHOWN ARE ONLY INDICATIVE OF LAYOUT. DIMENSIONS ARE APPROXIMATE

All information contained herein is gathered from sources we believe to be reliable, however we cannot guarantee its accuracy and interested persons should rely on their own enquiries. Dimensions are approximate.



404/1 RANDLE STREET

SURRY HILLS
Apartment Size: 57m²