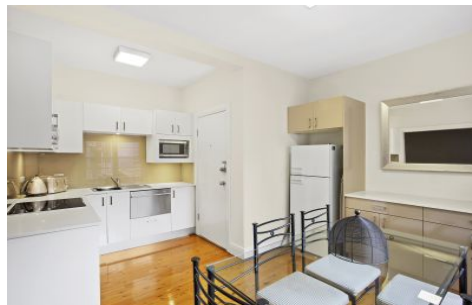




**EXECUTIVE STYLE
PROPERTY**



7/16 Waruda Street Kirribilli NSW

2  1  1 

EXECUTIVES take note; this LARGE LUXURY STYLISH apartment offers space and comfort in a boutique sandstone building on the edge of Sydney Harbour in desired Kirribilli Village.

OPERA HOUSE & HARBOUR VIEWS plus house sized floorplan, modern kitchen, designer bathroom, plus parking for 2 cars, this property has everything.

PERFECT LOCATION only 5min walking distance to Kirribilli Village and Train Station, plus Ferry only 200mtr walk, ferry operating direct to CBD, plus Darling Harbour, walk to Sydney CBD is only 30min over the bridge.

DESIRABLE APARTMENT FEATURES

- Fully furnished, you don't need a thing

View : <https://www.executivestyleproperty.com.au/lease/nsw/north-shore-lower/kirribilli/residential/apartment/5666073>



**Dean Merrett
0419 201 311**

<https://www.executivestyleproperty.com.au>

7 of 14 to 16 Waruda Street, Kirrabilli



Please note: All stated dimensions are approximate only. Particulars given are for general information only and do not constitute any representation on the part of the vendor or agent.