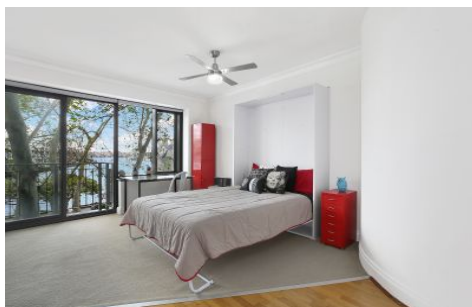




**EXECUTIVE STYLE
PROPERTY**



6/57 Cowper Wharf Road Woolloomooloo NSW

1

LARGE SUNNY NORTH FACING apartment boasting water views over Woolloomooloo Bay, the iconic Woolloomooloo Wharf and Garden Island.

Only 5 min walk to the CBD, Botanical Gardens or Potts Point cafe lifestyle.

DESIRABLE FEATURES INCLUDE:

- 50inch flat screen T.V
- Full kitchen, full fridge, full oven and dish washer
- Crockery, cutlery and appliances
- Queen sized bed with in built wardrobes
- Washing machine & clothes dryer
- Fully furnished inclusions - you dont need a thing

- North facing balcony to take in the Harbour Views
- Loads of storage space

View : <https://www.executivestyleproperty.com.au/lease/nsw/sydney-city/woolloomooloo/residential/studio/5666017>



Dean Merrett
0419 201 311