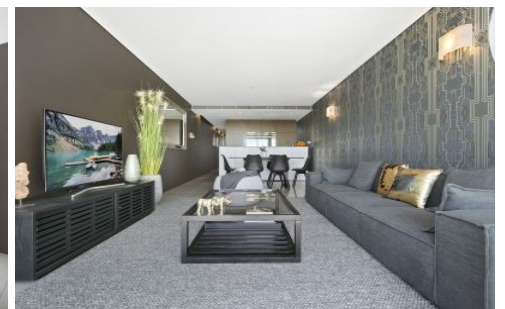




**EXECUTIVE STYLE  
PROPERTY**



**37/60-70 William Street Woolloomooloo NSW**

3 2 1

With cutting edge design and unbeatable views this desirable property is perfectly positioned looking onto Sydney Parklands & The Domain. You can walk to all of Sydney's top attractions as you are on the edge of the CBD as well as Surry Hills, Darlinghurst and Potts Point. Enjoy an iconic Sydney position & lifestyle while keeping a rare sense of serenity.

**DESIRABLE APARTMENT FEATURES:**

- + Woolloomooloo Bay water views
- + Sharp mod. tiles & finishes
- + Ducted air conditioning
- + Executive style furnishings
- + Opens onto a covered terrace
- + Large kitchen with crockery and cutlery included
- + Stone kitchen, Smeg gas appliances
- + Open-plan design + b/fast bar

**Land Size** : 120 sqm

**View** : <https://www.executivestyleproperty.com.au/lease/nsw/sydney-city/woolloomooloo/residential/apartment/5665994>



**Dean Merrett**  
**0419 201 311**



CARSPACE

BASEMENT 3



LEVEL TEN



Scale in metres. Indicative only. Dimensions are approximate. All information contained herein is gathered from sources we believe to be reliable. However we cannot guarantee its accuracy and interested persons should rely on their own enquiries.



37/40 William Street, Woolloomooloo